

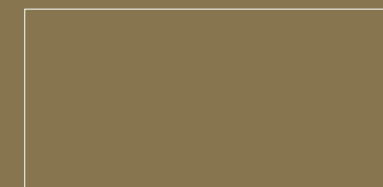
# FLORENCE



★★★★★  
**NAXOS**<sup>®</sup>  
C E R A M I C H E  
FINCIBEC GROUP

# FLORENCE

Stile Italiano  
Italian Style  
Итальянский стиль



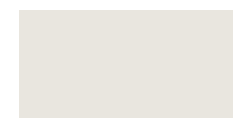
32,5x65 cm 12,8"x25,5"

rettificato

rectified

Ректифицированный

6 COLORI



Honey



Pearly



Chestnut



Blackcherry



Marine



Ebony

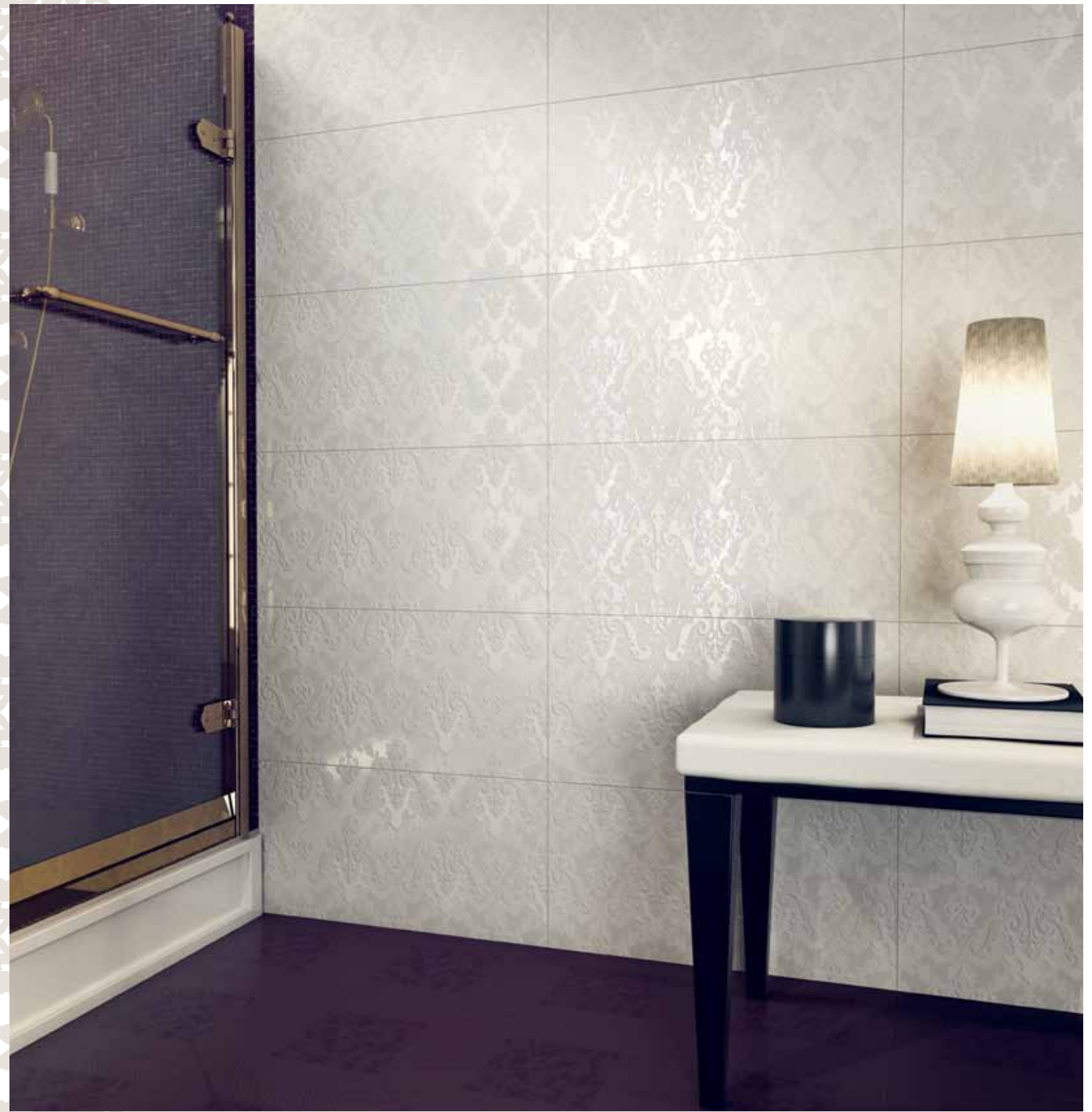


# FLORENCE

Ambiente realizzato con:  
Setting realized with:  
Интерьер выполнен с использованием:

Honey 32,5x65  
Fascia Flora Lilla 32,5x65  
Spaccatella Blackcherry 30x30  
Listello Florence Gold 2,5x65  
Blackcherry Pav. 32,5x32,5







## FLORENCE



Ambiente realizzato con:  
Setting realized with:  
Интерьер выполнен с использованием:

Honey 32,5x65  
Chestnut 32,5x65  
Fascia Elegant Avorio 32,5x65  
Fascia Elegant Moka 32,5x65  
Spaccatella Chestnut 30x30  
Modulo A/B/C Moka 30X30  
Listello Florence Gold 2,5x65  
Chestnut Pav. 32,5x32,5



FLORENCE



## FLORENCE



Ambiente realizzato con:  
Setting realized with:  
Интерьер выполнен с использованием:

Pearly 32,5x65  
Ebony 32,5x65  
Fascia Elegant Bianco 32,5x65  
Fascia Elegant Nero 32,5x65  
Mosaico Decò Ebony 32,5x32,5  
Listello Florence Gold 2,5x65  
Ebony Pav. 32,5x32,5



FLORENCE





# FLORENCE

Ambiente realizzato con:  
Setting realized with:  
Интерьер выполнен с использованием:

Pearly 32,5X65  
Marine 32,5x65  
Fascia Flora Blu 32,5x65  
Mosaico Decò Marine 32,5x32,5  
Mosaico Baroque Marine 32,5x32,5  
Listello Florence Platinum 2,5x65  
Marine Pav. 32,5x32,5





FLORENCE







32,5x65 ■ 131  
**79432 Honey**



32,5x65 ■ 139  
**79435 Blackcherry**



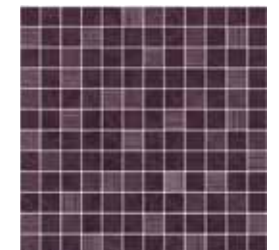
32,5x32,5 ■ 139  
**81163 Blackcherry Pav.**



32,5x65 ● 143  
**81171 Fascia Elegant Avorio**



32,5x65 ● 143  
**81167 Fascia Elegant Lilla**



32,5x32,5 ● 75  
**81180 Mos. Decò Blackcherry**



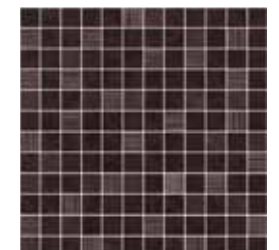
32,5x65 ■ 139  
**79433 Chestnut**



32,5x32,5 ■ 139  
**81154 Chestnut Pav.**



32,5x65 ● 143  
**81168 Fascia Elegant Moka**



32,5x32,5 ● 75  
**81159 Mos. Decò Chestnut**



32,5x65 ■ 131  
**79434 Pearly**



32,5x65 ■ 139  
**79436 Marine**



32,5x32,5 ■ 139  
**81165 Marine Pav.**



32,5x65 ● 143  
**81170 Fascia Elegant Bianco**



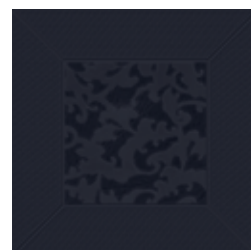
32,5x65 ● 143  
**81169 Fascia Elegant Blu**



32,5x32,5 ● 75  
**81181 Mos. Decò Marine**



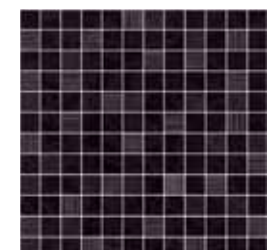
32,5x65 ■ 139  
**79437 Ebony**



32,5x32,5 ■ 139  
**81166 Ebony Pav.**



32,5x65 ● 143  
**81155 Fascia Elegant Nero**



32,5x32,5 ● 75  
**81182 Mos. Decò Ebony**



32,5x65 ● 145  
**81172** Fascia Flora Lilla



32,5x65 ● 145  
**81173** Fascia Flora Blu



32,5x65 ● 145  
**81175** Fascia Flora Red



32,5x65 ● 145  
**81174** Fascia Flora Ocra



2,5x65 ● 66  
**81156** Listello Florence Gold



2,5x65 ● 66  
**82207** Listello Florence Platinum



32,5x32,5 ● 45  
**81177** Mosaico  
 Baroque Blackcherry



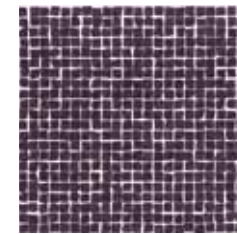
32,5x32,5 ● 45  
**81158** Mosaico  
 Baroque Chestnut



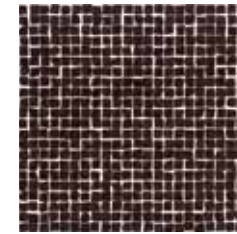
32,5x32,5 ● 45  
**81178** Mosaico  
 Baroque Marine



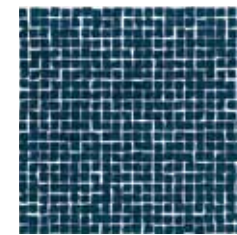
32,5x32,5 ● 45  
**81179** Mosaico  
 Baroque Ebony



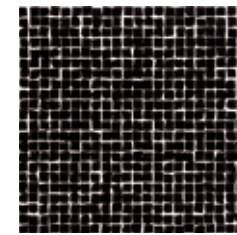
30x30 ● 111  
**81183** Spacc. Blackcherry



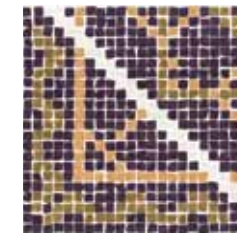
30x30 ● 111  
**81157** Spacc. Chestnut



30x30 ● 111  
**81184** Spacc. Marine



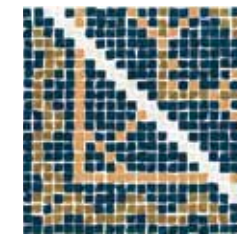
30x30 ● 111  
**81185** Spacc. Ebony



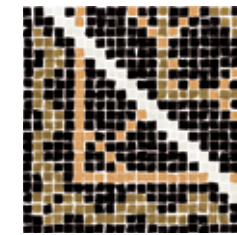
30x30 ● 198  
**82052** Modulo A (Lilla)



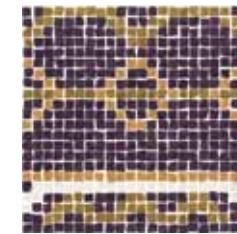
30x30 ● 198  
**82055** Modulo A (Moka)



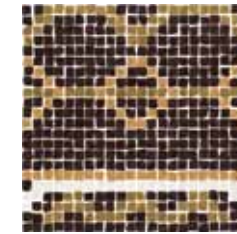
30x30 ● 198  
**82059** Modulo A (Blu)



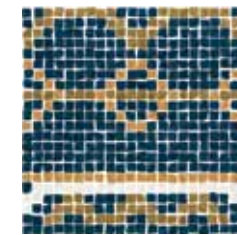
30x30 ● 198  
**82049** Modulo A (Nero)



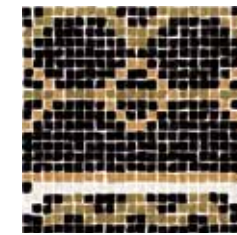
30x30 ● 198  
**82053** Modulo B (Lilla)



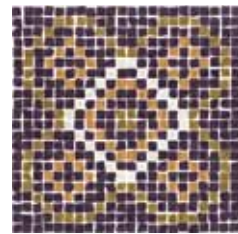
30x30 ● 198  
**82056** Modulo B (Moka)



30x30 ● 198  
**82060** Modulo B (Blu)



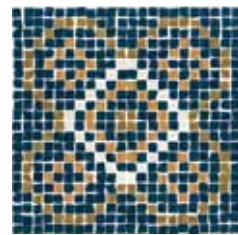
30x30 ● 198  
**82050** Modulo B (Nero)



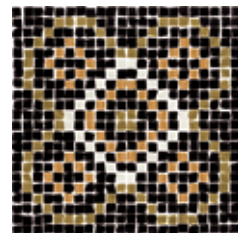
30x30 ● 198  
**82054** Modulo C (Lilla)



30x30 ● 198  
**82057** Modulo C (Moka)



30x30 ● 198  
**82061** Modulo C (Blu)


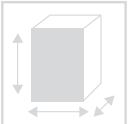








30x30 ● 198  
**82051** Modulo C (Nero)

# CARATTERISTICHE TECNICHE

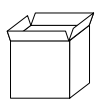
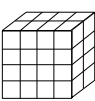
Technical data  
Caractéristiques techniques  
Technische Daten  
Características técnicas  
Технические характеристики

Rivestimenti e pavimenti in pasta bianca // White body wall and floor tiles // Revêtements et sols en pâte blanche // Weißscherbige Wand- und Bodenfliesen // Revestimientos y pavimentos en pasta blanca // Настенная и напольная плитка на основе белой глины

 <b>ISO 13006BIII</b> <b>EN 14411/L</b>	<b>Caratteristiche tecniche</b> Technical data Caractéristiques techniques Technische Daten Características técnicas Технические характеристики	<b>Tipo di prova</b> Standard of test Norme du test Testnorm Tipo de prueba Вид испытания	<b>Valore Naxos</b> Naxos standards Valeur Naxos Ergebnis Naxos Valor de Naxos Значение Naxos
	<b>Dimensioni</b> Sizes Dimensions Abmessungen Dimensiones Размеры	ISO 10545.2	<b>A norma</b> According to norm Selon la norme Nach Norm Conforme В норме
	<b>Assorbimento d'acqua</b> Water absorption Absorption d'eau Wasseraufnahme Absorción del agua Водопоглощение	ISO 10545.3	<b>&gt; 10%</b>
	<b>Resistenza a flessione</b> Breaking strength Resistance a la flexion Biegefestigkeit Resistencia a la flexión Сопротивление изгибу	ISO 10545.4	<b>spessore ≥ 7,5 mm</b> thickness - épaisseur - stärke - espesor - ширина ≥ 12 N/mm <sup>2</sup>  <b>spessore &lt; 7,5 mm</b> thickness - épaisseur - stärke - espesor - ширина ≥ 15 N/mm <sup>2</sup>
	<b>Coefficiente di dilatazione termica lineare</b> Thermal expansion coefficient Coefficient de dilatation thermique lineare Wärmeausdehnungskoeffizient Coeficiente de dilatación termica lineal Коэффициент термического линейного расширения	ISO 10545.8	<b>A norma</b> According to norm Selon la norme Nach Norm Conforme В норме
	<b>Resistenza al cavillo</b> Crazing resistance Resistance à la craquelure Widerstand gegen haarriss Resistencia al cuarteado Устойчивость к трещинообразованию	ISO 10545.11	<b>Garantita</b> Guaranteed Garantie Garantiert Garantizada Гарантирована
	<b>Resistenza all'attacco chimico</b> Chemical resistance Resistance chimique Beständigkeit gegen Chemicalien Resistencia al ataque químico Устойчивость к химическому воздействию	ISO 10545.13	<b>A norma</b> According to norm Selon la norme Nach Norm Conforme В норме
	<b>Resistenza alle macchie</b> Stains resistance Resistance aux taches Fleckenbeständigkeit Resistencia a las manchas Устойчивость к пятнообразованию	ISO 10545.14	<b>A norma</b> According to norm Selon la norme Nach Norm Conforme В норме

**Le tonalità dei colori presenti sul catalogo sono indicative**  
 The colours shades reported on the catalogue are indicative  
 Цветовые оттенки, приведенные в каталоге, могут отличаться от оригинальных.

## IMBALLI PACKAGING

		32,5x65 Riv.	32,5x32,5 Pav.	32,5x65 Fascia	32,5x32,5 Mosaico	30x30 Spaccatella	30x30 Mod. Spac.	2,5x65 Listello
	Pc.	5	10	2	5	5	2	4
	M <sup>2</sup>	1,06	1,06	0,4224	0,528	0,45	0,18	0,0652
	Kg	20,9	20,9	8,72	9,42	7,26	2,904	1,52
	Colli boxes	40	44	-	-	-	-	-
	Krt./Eur	-	-	-	-	-	-	-
	M <sup>2</sup>	42,4	46,64	-	-	-	-	-
	M <sup>2</sup> /Eur	-	-	-	-	-	-	-
	Kg	-	-	-	-	-	-	-
	Kg/Eur	836	919,6	-	-	-	-	-

## FLORENCE



★ ★ ★ ★ ★  
**NAXOS**<sup>®</sup>  
C E R A M I C H E  
FINCIBEC GROUP



**Uffici Comm.li, Stabilimento:**

Strada Statale 569, 169  
41014 Solignano (MO) Italy  
Tel. +39 059.748811  
Fax Export +39 059.797376  
Fax Italia +39 059.748841  
www.naxos-ceramica.it  
info@naxos-ceramica.it

**Magazzino:**

Strada Statale 569, 187  
41014 Solignano (MO) Italy

**FINCIBEC S.P.A**

**Amministrazione:**

Via Valle D'Aosta, 47  
41049 Sassuolo (MO) Italy  
Tel. +39 0536.861300  
Fax +39 0536.861351  
www.fincibec.it  
info@fincibec.it

**GRUPPO FIRE - Fire S.r.l.**

CERTIFICATO N. EDIL 2009\_012

